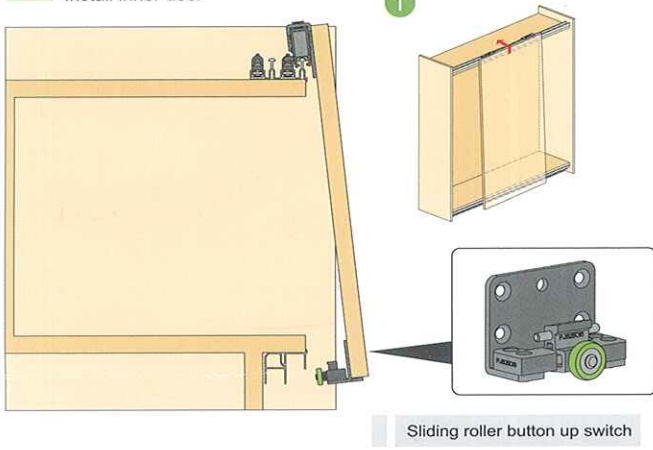
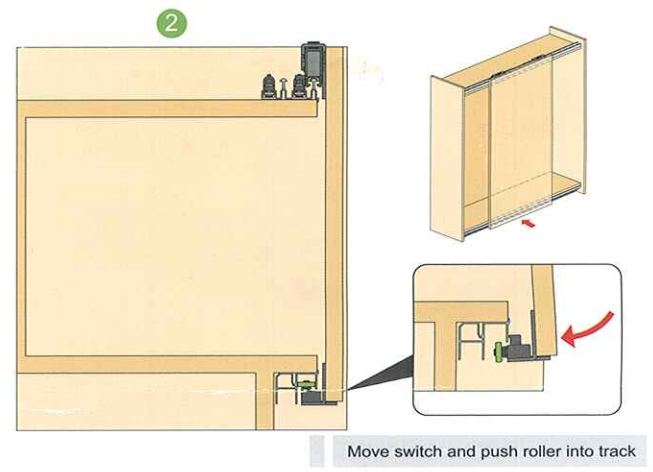


1 Install inner door

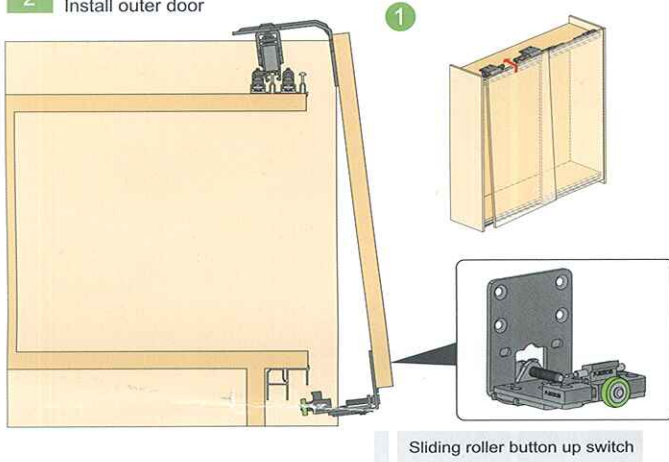


Sliding roller button up switch

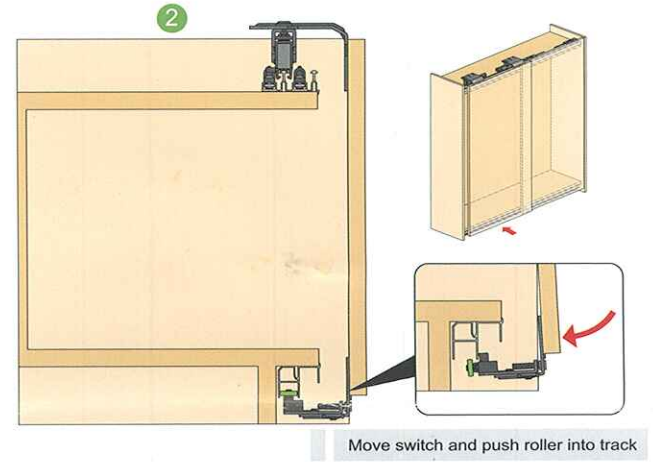


Move switch and push roller into track

2 Install outer door

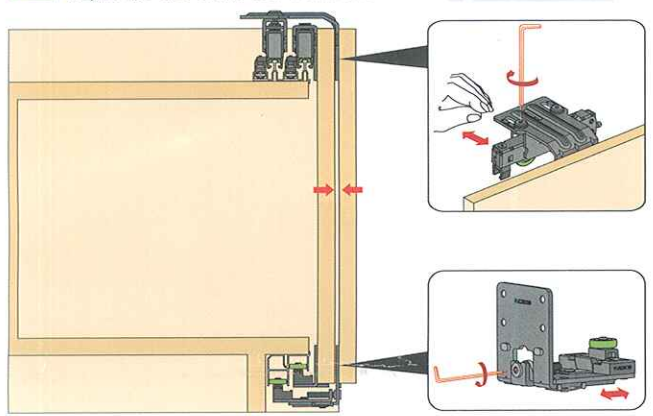


Sliding roller button up switch



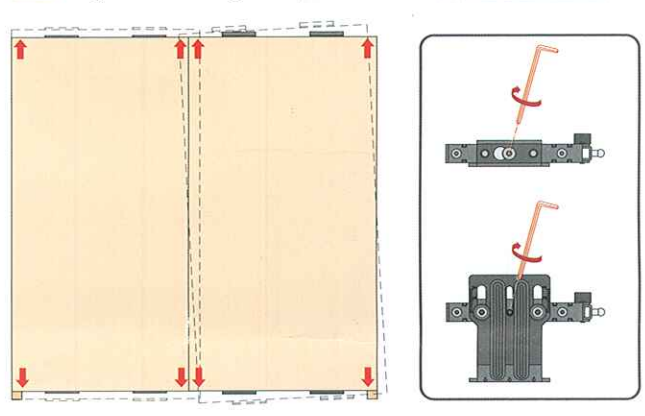
Move switch and push roller into track

3 Adjust the size of the door with frame



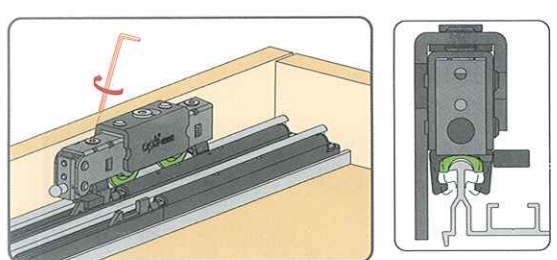
4mm hex wrench

4 Adjust the door height and parallel



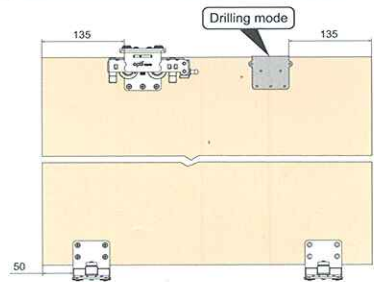
4mm hex wrench

5 Anti-jumping hook adjustment

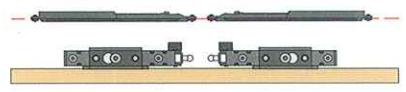


3mm hex wrench

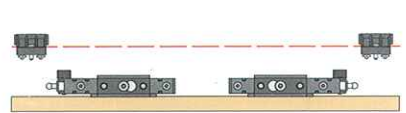
Accessories mounting direction diagram



Damper



Stopper



To adjust this anti-jumping hook, which can prevent door panel out of the rail